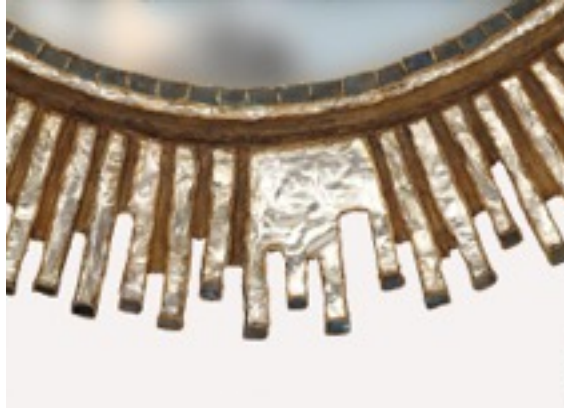


Maison Gerard to Debut at the Biennale des Antiquaires with Carolle Thibaut-Pomerantz

September 10th - 18th
Preview on September 9th
Grand Palais, Paris



Benoist Drut and Gerard Widdershoven have announced that Maison Gerard will exhibit at the Biennale des Antiquaires for the first time in September 2016, and will share a space with French antique wallpaper specialist, Carolle Thibaut-Pomerantz. Founded in 1974, Maison Gerard specializes in fine French Art Deco furniture and objets d'art, 20th century design, contemporary furniture, lighting and accessories. With period furniture spanning over half of a century from the early 1900 through the early 1960's, Maison Gerard's booth at the Biennale des Antiquaires will reflect a carefully curated mix of superb pieces from different periods and countries -- featuring Line Vautrin mirrors, an pair of rare and important cabinets by Maison Leleu, and a prized Robsjohn-Gibbings coffee table.

Highlights:

A Pair of Rare Cabinets by Maison Leleu

France, circa 1963

Stamped, numbered and signed by Jules Leleu (1883-1961)

Tortoiseshell with original key, gilt-bronze ornamentation, and carved jade details. Sycamore interior.

Height: 56" - Width: 31" - Depth: 18"

Provenance:

Acquired directly from the Schmitt family

Schmitt collection, Boulevard Suchet, Paris, France (custom ordered by M. Schmitt for this apartment)

Exhibited:

A similar cabinet was exhibited in *Leleu 50 ans de mobilier & de décoration, 1920-1970*, organized by the Musée des Années 30 in Boulogne-Billancourt, Paris, France- September 25th 2007 - January 6th 2008.

Bibliography:

Intérieurs, Le Mobilier Français, 1945-1964 Editions du Regard. p. 17
L'Ecaille by Lison de Caunes & Jacques Morabito, Edition Vial, p. 80



About Maison Leleu:

The house of Leleu rose to prominence in the 1920s during the Art Déco period, and became known for the ornate classicism of its richly refined furniture and lavish interiors. Jules Leleu was well known for his skillful use of uncommon materials, such as exotic woods, colored shagreen, and tortoiseshell. It was Jules' reverence for fine craftsmanship that had distinguished the company for nearly half a century, but each of his three children also took on essential roles in defining the business, especially in the later years of their father's life. The consistent signature "LELEU" for all designs from every department illustrates the collaborative nature of this supremely creative family.

Line Vautrin Mirrors

Maison Gerard is well known for their spectacular selection of rare examples of Line Vautrin's work, namely her signature jewelry, boxes, and compacts. The gallery has also carefully curated a collection of convex mirrors for which she was well known. Throughout her life and career, Vautrin, the iconic French artist and designer, refused to submit to the requirements and restraints of contemporary fashion. Some of her most famous creations were made by using a resinous material that she called "TaloseL." She worked with TaloseL by melting it down and forming it into ornaments and shapes. Her signature mirrors, framed in bronze and TaloseL, were inspired by Medieval and Renaissance art, and are highly sought after by collectors today. Two spectacular examples are shown below.

Roi Soleil Mirror by Line Vautrin (1913-1997)

France, circa 1965

TaloseL, multicolored mirrored glass

Diameter: 36.75"

Provenance: Private collection

Signed: *Line Vautrin Made in France.*

Accompanied by a certificate of authenticity signed by Line Vautrin's daughter, Mrs. Bonnaud-Vautrin.



Solaire Mirror by Line Vautrin (1913-1997)

France, circa 1965

TaloseL, lumaline, mirrored glass

Diameter: 35.5"

Provenance: Private collection

Signed: Line Vautrin

Accompanied by a certificate of authenticity signed by Line Vautrin's daughter, Mrs. Bonnaud-Vautrin

Dessert Table by Gilbert Poillerat (1902-1988)

France, circa 1940

Wrought-iron, copper, and glass

Height: 24.25" - Width: 33.5" - Depth: 18.5"

One of the most original and important designers of his time, Gilbert Poillerat was a furniture designer and wrought-iron master. Like many other furniture designers, he was trained at the storied École Boulle as a metalsmith and engraver, and graduated in 1921. Poillerat's career was rich and varied. He worked with renowned wrought-iron designer Edgar Brandt for seven years and was a professor of the esteemed École National des Arts Decoratifs, where he taught for 26 years. Poillerat collaborated with many of the leading designers of his time, including André Arbus, Jean Pascaud, and Vadim Androusov, and his prolific work ranged from museum exteriors to domestic interiors.



Music Stand by Jules Bouy (1872-1937)

United States, circa 1920's

Nickel-plated metal and steel

Height: 40" - Width: 17" - Depth: 16"

Provenance:

Collection of Lucile Lawrence

Jules Bouy was a New York furniture maker who was born in France and trained as a metalsmith. He settled in New York before WWI and sold the ironwork creations of Edgar Brandt as a side career, while his day job was in the New York office of a Parisian decorating firm. By 1928, he had had established his own firm, Bouy, Inc. Even though he designed many full-range interiors and had a large repertoire of furniture designs, he specialized in metalwork and iron fabrication. His elite clients were among New York's most sophisticated and include Lizzie P. Bliss, a founder of the Museum of Modern Art.



Fine and Early Art Deco Armchair (Fauteuil Guinde) by Emile-Jacques Ruhlmann (1879-1933)

France, circa 1924-25

Mahogany, upholstered in Prella fabric

Height: 34.5" - Width: 23.5" - Depth: 26"

Seat height: 19"

Provenance:

Private collection, France.

Exhibited:

A similar model was exhibited at the Hôtel du Collectionneur, Ruhlmann's own pavilion at the *Exposition Internationale des Arts Décoratifs & Industriels Modernes*, April-October 1925.

Bibliography:

For an illustration of this model, see:

Mobilier & Décoration, 1927. 133.

Ruhlmann: un génie de l'Art déco. Paris: Somogy éditions d'art, 2001. 299.

This model was recorded in Ruhlmann's own original catalogue under the references: 80 AR & 153 NR.



Fine and Rare Coffee Table by T.H. Robsjohn-Gibbings (1905-1976)

United States, circa 1938

Carved acacia wood and original glass top

Height: 21.5" - Width: 60" - Depth: 32"

Stamped: *Sans Epoque, Robsjohn-Gibbings*

Provenance:

This table was created for the Brentwood, CA home of architect James Dolena. Dolena and Gibbings worked closely during this period on several projects including the very well known home of Mrs. Hilda Boldt Weber, "Casa Encantada," for which Dolena was the architect.

Bibliography:

For an illustration of this table, see *Architectural Digest*, Vol. 10, no. 3. 43.



Art Deco Writing Table/Desk by Dominique - André Domin (1883-1962) and Marcel Genevrière (1885-1967)

France, circa 1930

Walnut with shagreen writing surface and chrome accents

Height: 28" - Width: 62.5" - Depth: 18.5"

Bibliography:

For an illustration of an identical model, see:

Marcilhac, Félix. *Dominique: Decorateur-ensemblier du XX siècle*. Paris: Les Editions de l'Amateur, 2008. 215.



Carolle Thibaut-Pomerantz



Maison Gerard is pleased to share space at the 2016 Biennale des Antiquaire with Carolle Thibaut-Pomerantz. Thibaut-Pomerantz, trained as an art historian, deals in the decorative arts, with a specialty in fine vintage wallpapers from the 18th century to the 1950's. She has pioneered the rediscovery of this unique mural art form, known as "Papiers Peints" and is known as "the" specialist in this field. She is based both in Paris and New York.



As a private dealer, she advises collectors, designers and corporations both in Europe and the United States. She also exhibits in major International art fairs, such as TEFAF, Maastricht; Winter Antiques Show, New York and Masterpiece, London. Many of her rare vintage papers have been acquired by major museums, such as the Metropolitan Museum of Art, Philadelphia Art Museum, Boston Museum of Fine Arts, Chicago Art Institute, Musée des Arts Décoratifs in Paris, and Kunstgewerbemuseum Staatliche in Berlin. In addition, she is a member of the Compagnie Nationale des Experts and the National Art and Antique Dealers Association of America.

About Maison Gerard

Since its founding in 1974 by Gerardus Widdershoven, Maison Gerard has specialized in fine French Art Deco furniture, lighting and objets d'art. It has sustained a particular focus on and passion for the work of Maison Leleu, the famed French design house to which the gallery has devoted three exhibitions, in addition to providing the introduction to Françoise Siriex's definitive text, *The House of Leleu: Classic French Style for a Modern World*.

Maison Gerard has also helped to form the collection of Walter Chrysler Jr. which is now in the Chrysler Museum in Norfolk, VA, assembled the Design Collection of the Utsonomia Museum in Japan, and built numerous private collections. Exhibitions by Maison Gerard have presented the work of important Art Deco designers such as Jules Bouy, Jean-Michel Frank, Jules Leleu and E.J. Ruhlmann. Through shows such as *The Birth of A Style: 1910-1925, Paris 1930, Primitive & Modern*, and *Dix Neuf Cent Quarante (1940)*, the gallery has sought to illustrate the subtle movements within this period.

Maison Gerard has also gained recognition for introducing and cultivating the talents of contemporary designers and artists including Hervé van der Straeten, Jean Girel, Marc Bankowsky, Matthew Solomon, Carol Egan, Miguel Cisterna, Eric Astoul, Ayala Serfaty, and Achille Salvagni among others.

Maison Gerard has been a key source for top design firms including Brian J. McCarthy, David Kleinberg Design, Michael Smith Inc., Thad Hayes Design, Victoria Hagan Interiors, Benjamin Noriega-Ortiz, Pierce-Allen, The Wiseman Group, Fox-Nahem Design, Haynes Roberts, Inc., Jamie Drake Design, James Marzo Design, Robert Couturier Inc., Peter Marino Architect, and MR Architecture.

For press inquiries please contact:

Stacy McLaughlin Communications
Stacy McLaughlin
140 West 57th Street, Suite 11C
New York, New York 10019
Stacy@smcpr.nyc
(646) 867-2812